

# Accelerate Field to Office Communication Without Leaving Procore

Our OpenSpace and Procore integration streamlines visual documentation, Observations, RFIs, Punch Lists, and QA/QC processes for builders.

## Automatically export 360° images to Procore

OpenSpace uses cutting-edge AI technology to capture your complete jobsite and automatically map imagery to project plans with little to no extra work. Those images can be directly exported to Procore, without data silos or toggling between software applications.

## Embedded app—Procore marketplace

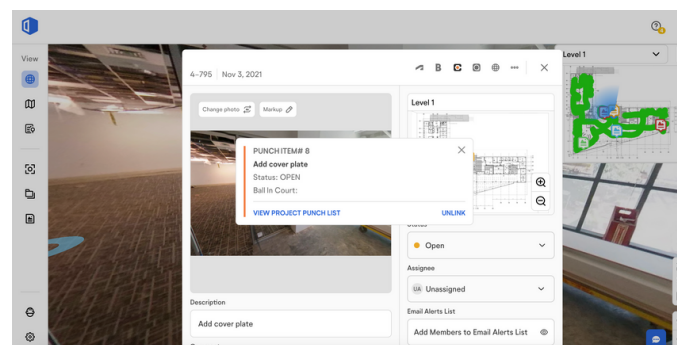
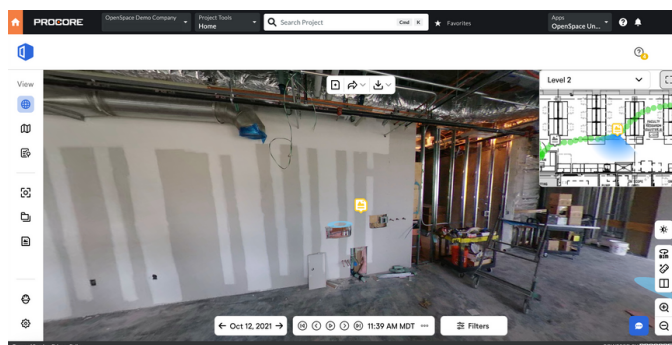
Within Procore, you can view your entire OpenSpace project. Easily navigate through your project floor plans, image captures, Field Notes, and Admin Reports without ever leaving Procore.

## Built-in access to virtual walkthroughs

OpenSpace virtual walkthroughs—which reduce the need to visit physical sites by up to 50%—are available directly within Procore. Navigate the project as if you were on-site and make informed decisions to keep your project moving forward.

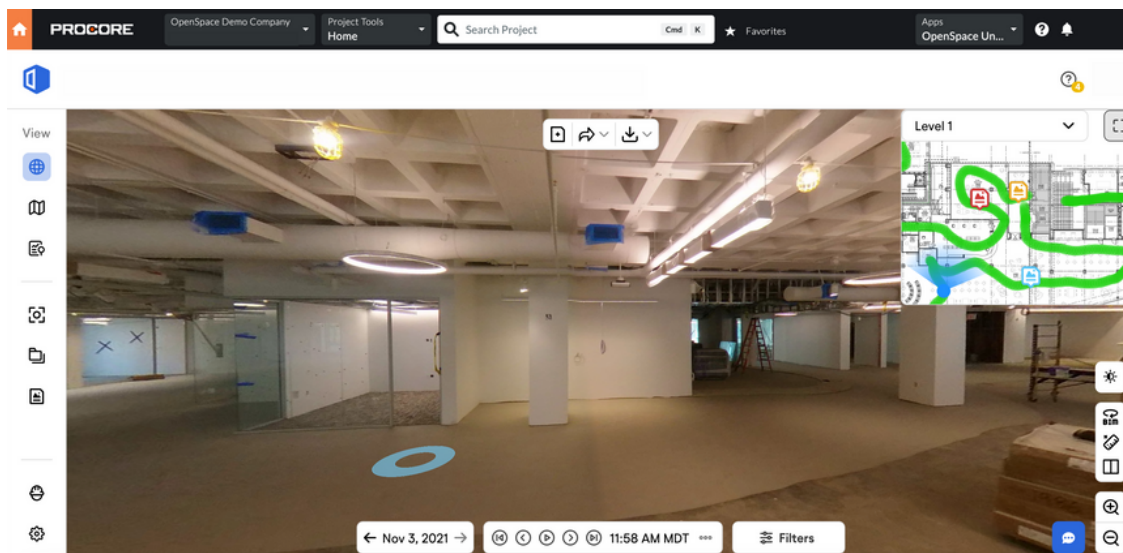
## Improved documentation for RFIs and Observations

With the OpenSpace integration, you can attach visual references and precise locations to RFIs and Observations within Procore automatically, reducing ambiguity and simplifying collaboration among all project team members. You can also attach OpenSpace imagery to your Punch List to share and close out items with ease and efficiency.



## How it works

- Mount a 360° camera to your hard hat and simply walk the site as you normally do—the camera will capture your entire site continuously. Or capture any other way you want, including with drones and laser scanners—access all that data in OpenSpace for storing, viewing, and sharing.
- While you walk, you have the option to create Field Notes with text and mobile phone photos to document an area in greater detail—perfect for RFIs, Observations, Punch List items, and more.
- OpenSpace's cloud-based AI platform processes and stores the imagery and maps it—both the 360 photos and Field Notes—to project plans, all automatically.
- Easily export images from OpenSpace directly into Procore's Photos section.
- Generate RFIs, Observations, and Punch List items from any photo in OpenSpace with a couple of clicks—they'll now automatically include relevant visual information, accurately tied to your plans.
- With Procore Embedded Experience, simply install the OpenSpace app and easily access your data within Procore.



**“Having access to frequent and complete visual documentation improves communication across a jobsite, especially for things like RFIs and Observations. By embedding key OpenSpace documentation features into Procore, we’re providing a value-add for our customers using the field’s most cutting-edge technology.”**

Eric Tucker, Head of Partnerships at Procore

**PROCORE**



## Get started with OpenSpace

Ready to streamline site documentation directly within Procore? Scan the code, email [info@openspace.ai](mailto:info@openspace.ai), or visit [www.openspace.ai/get-a-demo](http://www.openspace.ai/get-a-demo) to request a demo.

