



info@openspace.ai  
openspace.ai

# OpenSpace Capture

# Reality capture, made simple



## Easy

Attach a camera, tap record, and walk the site  
—it's that simple.



## Powerful

AI powers our platform, giving you the  
information you need to make quick decisions.



## Fast

Capture 25,000 square feet in 10 minutes and view your  
data in just 15 minutes on average.



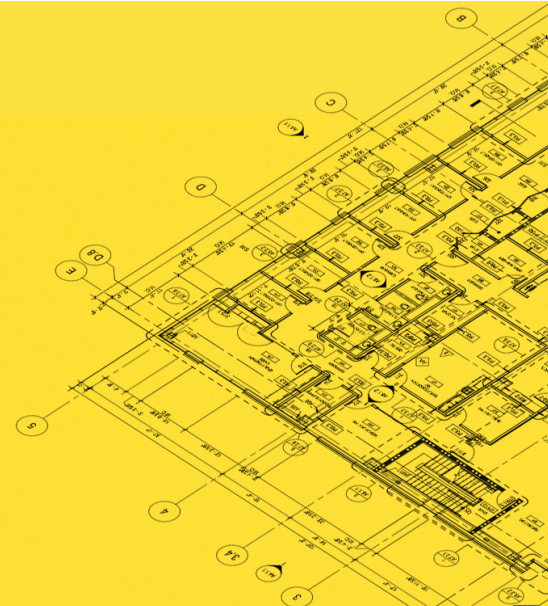
## Reliable

We're trusted on 27K+ projects, SOC 2 certified, and  
backed by blue-chip investors.



“OpenSpace provides the benefits of virtual walkthroughs and full-coverage documentation almost instantly—without requiring extra hours to process and locate photos. OpenSpace captures have helped us build trust with the landlord, owner, architect, and construction manager.”

**Michael McCullagh**  
Superintendent



# Capture your site with unmatched speed and simplicity

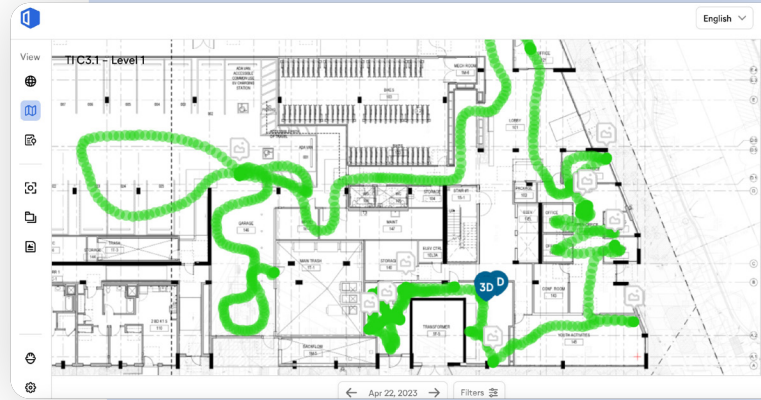
Completely document your site for a live, as-built  
record of the building from preconstruction to handover  
and operation.

**Go from capture to conversation in minutes.**

# Capture

## Automated site capture made easy

Confidently capture the images you need—and even some you might not know you need—with little to no extra work. Simply connect your camera and walk your site. Capture 25,000 square feet in 10 minutes, hands free. That's it. Our Vision Engine takes over from here, automatically mapping images to your plans. No more searching for photos in files or albums.



## 360° video and photos

Attach a 360° camera, tap record in the OpenSpace app, and walk the site as you normally would. Our capture coverage heatmap shows you areas previously captured, helping you plan your next capture path. You can also take 360° photo stills and mobile phone photos any time and pin them to your floor plan.



## Mobile devices

Download our mobile app on your Apple iPhone, iPad, or Android device. Then use QuickConnect to sync your 360° camera. On the jobsite use your device to add a Field Note, take and pin photos to floor plans, and compare current field conditions to BIM for streamlined communication.



## LiDAR and laser scanning

With our 3D Scan feature, use your LiDAR-enabled iPhone or iPad to quickly get an accurate three-dimensional scan with two inch measurement accuracy. We also integrate with Forge Point Cloud View so you can bring in your laser scan data for storing, viewing, and sharing with other team members all within OpenSpace.



## Image enhancements

Lighting conditions on a jobsite can be imperfect, and we know image quality is important. Use our image enhancement tools to adjust brightness, shadows, and sharpness to improve quality after you've captured and avoid another trip to the site.



## Drones and robots

With OpenSpace, capture how you want—if you can attach a camera to it, you can capture with it. Fly your jobsite and map it to your elevation plans using the integrated dual 360° camera, Insta360 Sphere, for the best drone capture experience.



## Heat Notes

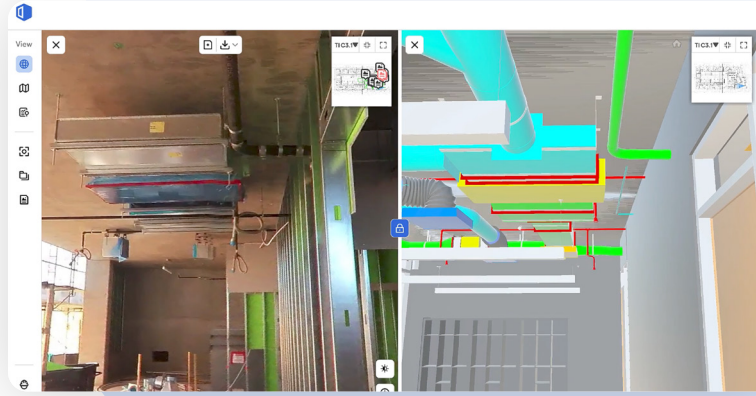
Attach an off-the-shelf infrared camera to your mobile device and gather IR data to understand thermal conditions for insulation, hot work, and water leaks.

# Collaborate

## Project coordination that solves problems

OpenSpace maps and publishes your images lightning fast—start viewing in 15 minutes on average.

Communicate visually by adding Field Notes to your project, putting critical information at your team's fingertips to make decisions and get the job done.



### Split View

Track progress across time from the trailer, office, or halfway across the world. Just pick two dates to get a side-by-side comparison of any captured area—see photos of what was in place before concrete was poured or drywall was installed.



### Reveal Mode

While on-site, it's easy to use your phone for a quick comparison of current and past conditions. Reveal Mode overlays a previous capture in real time to the current condition in front of you—then use the slider to reveal any items that have been covered up or built over.



### Shared Folders

Securely share a select set of OpenSpace captures with specific people on your project team or via a public link to guests. Simply create a folder, choose your captures, and add email addresses.



### Field Notes

Create notes while you're capturing and add detailed comments, images, or attachments—our software automatically pins them to floor plans. Field Notes enable powerful image-based workflows and communication that eliminate back-and-forth emails or phone calls.



### BIM coordination

Navigate and compare your site conditions to your BIM (not just a 3D image)—your model is fully aligned and you can turn layers on and off, snap measurements, and save views to share. If you're actively working with BIM, we also offer OpenSpace BIM+, an add-on suite of easy-to-use 3D tools that connect the field and office. Learn more about our BIM features at [www.openspace.ai/products/bimplus/](http://www.openspace.ai/products/bimplus/).



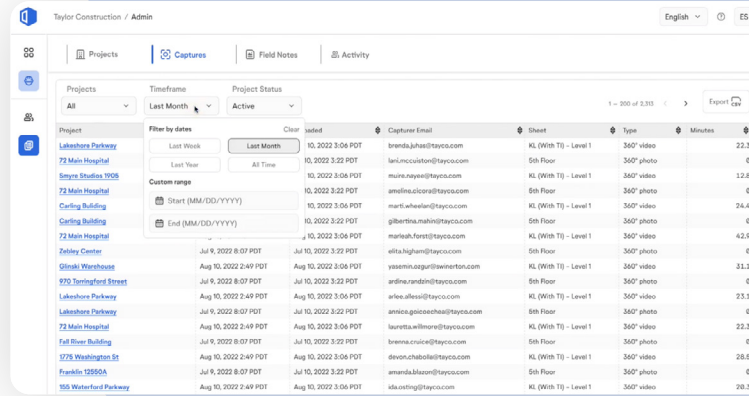
### Smart integrations

We don't like double entry, and we bet you don't either. View OpenSpace captures and Field Notes in Procore, Autodesk Construction Cloud (BIM 360 & Build), Revizto, and PlanGrid. Plus, export image data directly into RFIs, observations, and more.

# Manage

## Scalable admin tools that empower

Securely manage projects and users, gain visibility into OpenSpace adoption and usage across your portfolio, and showcase OpenSpace ROI to stakeholders and clients.



| Project               | Timeframe          | Project Status | Date                  | Capturer Email           | Sheet                       | Type                  | Minutes    |      |
|-----------------------|--------------------|----------------|-----------------------|--------------------------|-----------------------------|-----------------------|------------|------|
| Lakeshore Parkway     | Last Month         | Active         | 10, 2022 3:06 PDT     | brenda.jahedi@tyco.com   | KL (With T) - Level 1       | 360° video            | 22.3       |      |
| 72 Main Hospital      | Last Year          | All Time       | 10, 2022 3:22 PDT     | luc.mccusker@tyco.com    | 5th Floor                   | 360° photo            | 0          |      |
| Simon Fraser 3506     | Custom range       |                | 10, 2022 3:04 PDT     | maria.davayda@tyco.com   | KL (With T) - Level 1       | 360° video            | 12.8       |      |
| 72 Main Hospital      | Start (MM/DD/YYYY) |                | 10, 2022 3:22 PDT     | ameliacolon@tyco.com     | 5th Floor                   | 360° photo            | 0          |      |
| Carding Building      | End (MM/DD/YYYY)   |                | 10, 2022 3:04 PDT     | wart.wheeler@tyco.com    | KL (With T) - Level 1       | 360° video            | 24.4       |      |
| 72 Main Hospital      |                    |                | 10, 2022 3:04 PDT     | gilberta.mahini@tyco.com | 5th Floor                   | 360° photo            | 0          |      |
| Debley Center         |                    |                | Jul 9, 2022 8:07 PDT  | Jul 10, 2022 3:22 PDT    | vika.higham@tyco.com        | 5th Floor             | 360° photo | 0    |
| Gitnick Warehouse     |                    |                | Aug 10, 2022 2:49 PDT | Aug 10, 2022 3:04 PDT    | yasemin.azgur@twinteron.com | KL (With T) - Level 1 | 360° video | 31.1 |
| 920 Tonbridge Street  |                    |                | Jul 9, 2022 8:07 PDT  | Jul 10, 2022 3:22 PDT    | andrea.randini@tyco.com     | 5th Floor             | 360° photo | 0    |
| Lakeshore Parkway     |                    |                | Aug 10, 2022 2:49 PDT | Aug 10, 2022 3:22 PDT    | arlee.alfes@tyco.com        | KL (With T) - Level 1 | 360° video | 23.1 |
| Lakeshore Parkway     |                    |                | Jul 9, 2022 8:07 PDT  | Jul 10, 2022 3:22 PDT    | amrica.gaceceh@tyco.com     | 5th Floor             | 360° photo | 0    |
| 72 Main Hospital      |                    |                | Aug 10, 2022 2:49 PDT | Aug 10, 2022 3:04 PDT    | lauretta.willmore@tyco.com  | KL (With T) - Level 1 | 360° video | 22.3 |
| Fall River Building   |                    |                | Jul 9, 2022 8:07 PDT  | Jul 10, 2022 3:22 PDT    | brenna.cruise@tyco.com      | 5th Floor             | 360° photo | 0    |
| 1728 Washington St    |                    |                | Aug 10, 2022 2:49 PDT | Aug 10, 2022 3:04 PDT    | divon.chabolla@tyco.com     | KL (With T) - Level 1 | 360° photo | 28.5 |
| Franklin 12950A       |                    |                | Jul 9, 2022 8:07 PDT  | Jul 10, 2022 3:22 PDT    | armanda.blazon@tyco.com     | 5th Floor             | 360° photo | 0    |
| 105 Waterford Parkway |                    |                | Aug 10, 2022 2:49 PDT | Aug 10, 2022 3:04 PDT    | skia.cotting@tyco.com       | KL (With T) - Level 1 | 360° video | 28.3 |



## Manage users

Save time by easily scaling your enterprise with our Team Management tool. Add one to hundreds of users in seconds, or integrate with single sign-on. Easily change permission levels and resend any missed email invitations to ensure your team members have access to their OpenSpace projects.



## Subscription Portal

The easiest way to maximize the value of your OpenSpace license is through our Subscription Portal. Log in to review your contract, adjust project start and end dates, understand how much capacity you have used, and how much you have left for new projects.



## Admin reports

Gather essential data on captures, Field Notes, and other OpenSpace activity with admin reporting. Plus, easily export reports as PDF or CSV files to share and showcase the value of OpenSpace to stakeholders.



## Offline Deliverable

Get a zip-file download of your full project to view your 360° captures. This file is a historical record spanning various phases, installations, and conditions during construction and is yours to keep for a lifetime (or longer).



## Security and SOC 2

OpenSpace is Privacy Shield certified, SOC 2 compliant, and even compliant with the planet's strictest security policies, EU's GDPR. We're also working to receive FedRAMP certification. Learn more about our industry-leading security program and security commitment at [www.openspace.ai/security/](http://www.openspace.ai/security/).



## Update plans and BIM

Admins can easily update floor plans or BIM in OpenSpace by replacing or syncing files in project settings. No additional work is needed—our AI automatically maps every image to your new plan or model.



# See how OpenSpace Capture can **boost** your efficiency.

Visit [www.openspace.ai/demo](http://www.openspace.ai/demo) today.

## About OpenSpace

OpenSpace is the global leader in reality capture and AI-powered analytics for builders, letting them quickly capture a comprehensive visual record of their jobsites to verify work-in-place, simplify dispute resolution, and keep teams accountable. More than 140,000 users in 93 countries rely on OpenSpace to get the job done.

© OpenSpace, 2023. All rights reserved.



Scan to see  
OpenSpace  
in action.